



### KEY FEATURES

- Designed to cut between gaps in flanges
- Rough Locators aid fast installation
- Can be used in conventional and upside down orientation
- Circular saw blade powered by 10kw hydraulic motor
- Ratchet strap aids quick repositioning
- 4 lifting points

### DESCRIPTION

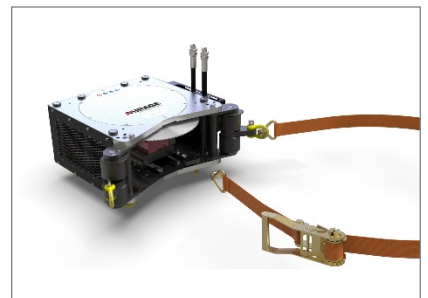
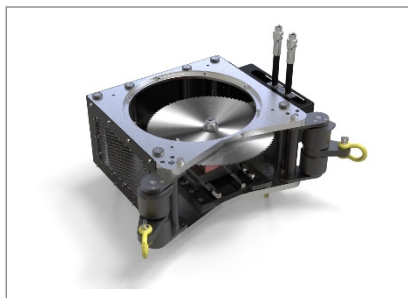
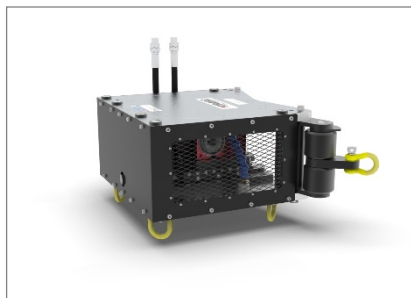
The MBS 1360 bolt saw is designed to clamp onto flanges and cut the studs through the flange gap. The pivoting clamps and ratchet strap ensures a single machine can be mounted onto a wide range of flange diameters

### APPLICATIONS

Commonly on decommissioning projects when flange bolts are seized and cannot be loosened.

### SPECIFICATIONS

Mounting Dimensions (Flange Diameters)	521 – 1810mm	20.5" – 71.25"
Blade Cutting Stroke	150mm	5.9"
Blade Diameter	355mm	14"
Hydraulic Drive Motor	10 kw	13.4 hp
Hydraulic Flow Required	60 L/min	15.8 Gal/min



### INCLUDED AS STANDARD WITH MACHINE

The machine is supplied complete with the following items;

- ✓ Circular Saw Blade
- ✓ Ratchet Strap
- ✓ Storage / shipping box
- ✓ CE Certificate
- ✓ Hydraulic Hose Connections
- ✓ Packing list and manual

### SET UP AND OPERATION

The operator must be:

- Trained and conversant with the product
- Able to identify the correct and incorrect use of static or portable machines.
- Comply with all local and internationally recognised safe use of powered machines.

### MACHINE WEIGHT

110 kg	243 lb
--------	--------

### SHIPPING WEIGHT

204 kg	450 lb
--------	--------

### SHIPPING DIMENSIONS

Length	Width	Height
84cm (33")	74cm (29")	72cm (28")