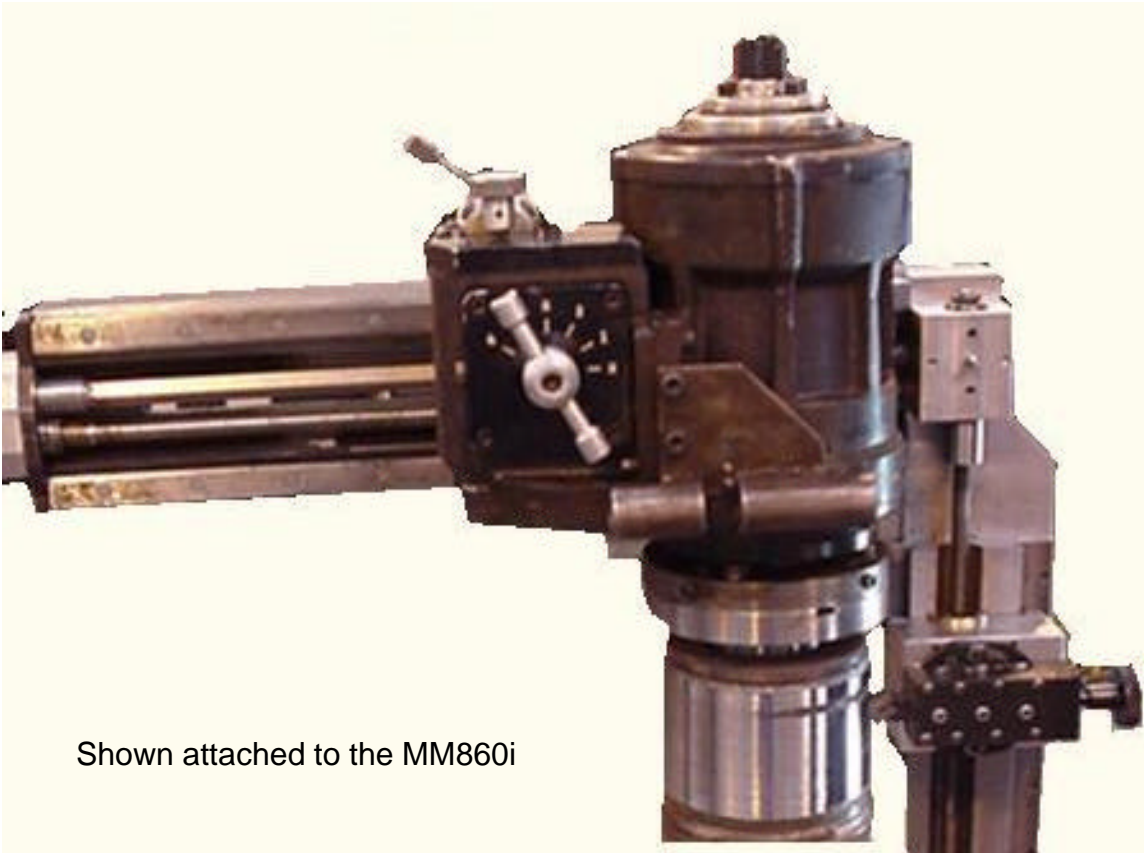


MMi8700 Turning Attachment

*Diameters from 50mm Up To 3000mm
Length (Unsupported 400mm (16"))*

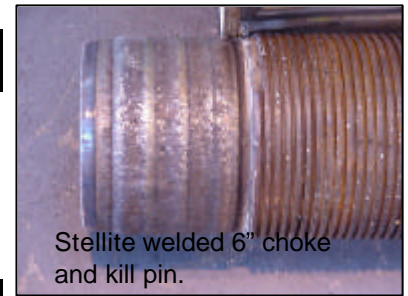


Shown attached to the MM860i

- **Auto Downfeed - 4 feeds.**
- **Slide extensions available.**
- **Attaches to a standard flange facer .**
- **Adjustable slide for quick taper removal.**
- **Linear profile rails for maximum rigidity.**

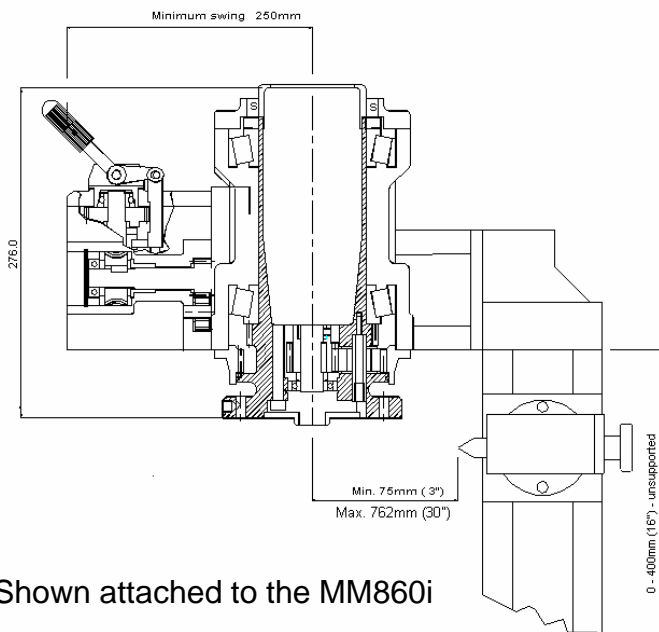
General description

The turning attachment was first designed to cut stellite choke and kill pins for offshore projects. This has been expanded now to cut standard journals making use of the drive and feed system of the standard flange facers in our product range right up to the MM3000i. This enables the machine to not only journal turn but also flange face as well. Slide extensions & bearing supports available.

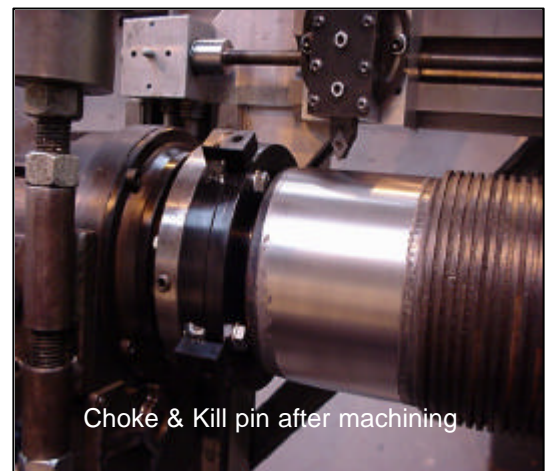


Stellite welded 6" choke and kill pin.

Dimensions



Shown attached to the MM860i



Choke & Kill pin after machining

Range

Machine	Min. Diameter	Max. Diameter	Toolpost travel	Feed System
MM760i	75mm (3")	760mm (30")	75mm (3")	Manual striker
MM860i	75mm (3")	860mm (34")	75mm (3")	Auto (4 feeds)
MM1000i	100mm (4")	1000mm (40")	75mm (3")	Auto (4 feeds)
MM1500i	200mm (8")	1500mm (60")	75mm (3")	Auto (4 feeds)
MM2000i	610mm (24")	2000mm (80")	75mm (3")	Auto (4 feeds)
MM3000i	1220mm (48")	3000mm (120")	75mm (3")	Auto (4 feeds)

Weights

Machine Weight	45 Kg
Attachment weight	20 Kg
Shipping Weight	180Kg
Shipping Dimensions	Length: 711mm (28")
	Width: 432mm (17")
	Height: 686mm (27")

